

DON'T YOU WORRY 'BOUT A THING

Words and Music by
STEVIE WONDER

Moderate Latin Beat

N.C.

mf

First system of the piano introduction, featuring a treble and bass clef with a key signature of one sharp (F#) and a 4/4 time signature. The music is marked 'N.C.' and 'mf'.

Second system of the piano introduction, continuing the melodic and harmonic development.

§

Em

B+

Em7

First system of the vocal line, starting with a rest followed by the beginning of the first phrase.

Ev - 'ry - bod - y's got —
say your style — of life's —
- 'ry - bod - y needs —

Third system of the piano accompaniment, providing harmonic support for the vocal line.

A7

Dm

F/G

Cmaj7

B+/F

Second system of the vocal line, continuing the melody.

— a thing, — but some don't — know — how to han - dle it. —
— a drag, — and that you must go — oth - er plac - es. — But
— a change, — a chance to — check — out the new. — But

Fourth system of the piano accompaniment, concluding the piece with a final chord.



Al - ways reach - in' out ___ in vain, ___ ac - cept - ing the things ___ not worth hav -
 just ___ don't ___ you feel ___ too bad, ___ when you get ___ fooled ___ by ___ smil -
 you're the on - ly one ___ to see ___ the chang - es you take ___ your - self through.



N.C.



ing. ___ But don't you wor - ry 'bout a thing.
 ing fac - es. ___ But don't you wor - ry 'bout a thing.
 Don't you wor - ry 'bout a thing.



Don't you wor - ry 'bout a thing, ___ ma - ma. ___ }
 Don't you wor - ry 'bout a thing, ___ ma - ma. ___ } 'Cause ___ I'll be
 Don't you wor - ry 'bout a thing, pret - ty ma - ma. ___ }

Amaj7 C/D To Coda ⊕ 1 G(add2)

stand - in' { on the side } when you check it out. _____
 { on the side }
 { in the wings }

2 B+ G Gb F E Eb 3fr

They _____

D G(add2) G Gb F N.C.

When you get off _____

E Eb 3fr D G(add2) N.C.

your trip. _____ Don't you wor - ry 'bout a _____

Em B+ Em7 Em6/B Fmaj7

thing.

Em B+ Em7 Em6/B

Don't you wor - ry 'bout a thing.

Ba _____ bum _ ba, _ bum ba. _

Fmaj7 Em Em B+ Em7

_____ bum ba, _ bum. Bum bum bum bum, _ bum, bum. _____ Ba _

A7 Dm F/G Cmaj7 1 B+/F

2

B+/F



N.C.

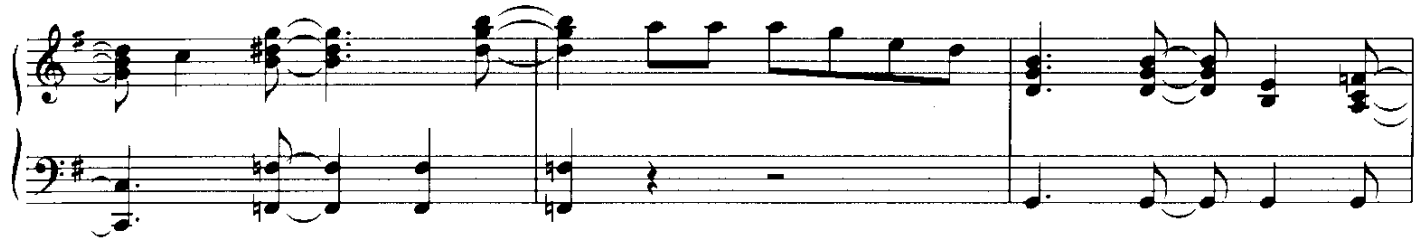
G



F/G



Don't you wor - ry 'bout a thing.



Bm



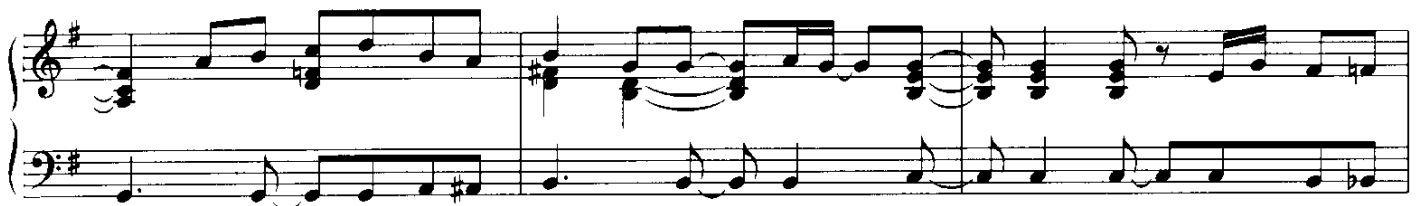
G/B



Cmaj7



Don't you wor - ry 'bout a thing, ma - ma. 'Cause I'll be



Amaj7



C/D



G



Gb



F



stand - ing on the side when you check it out.



E



Eb



D



G(add2)



N.C.



When you get





off _____ your trip. _____

B7+ D.S. al Coda

CODA

Ev -



N.C.



Don't you wor - ry 'bout a thing. _____



Repeat and Fade

Don't you wor - ry 'bout a