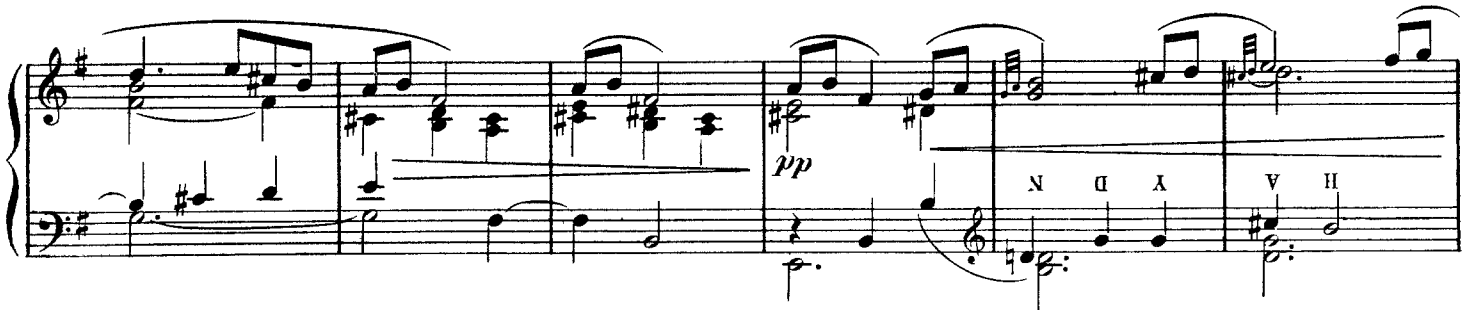
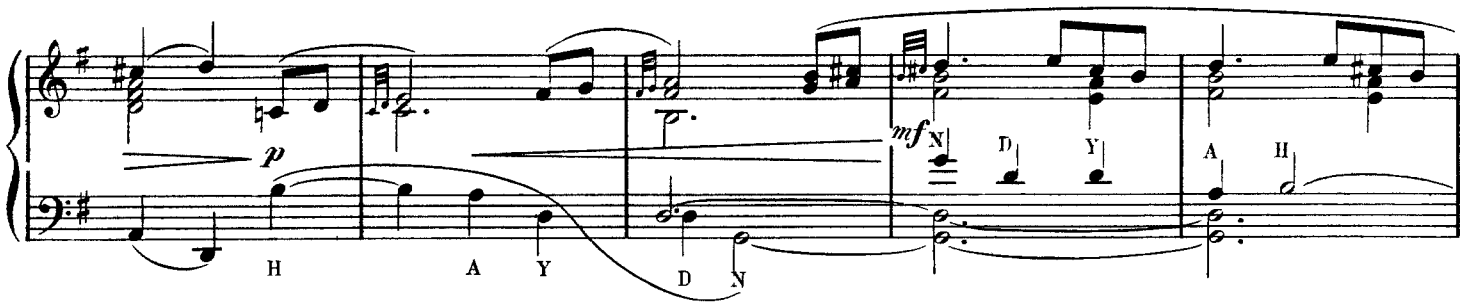
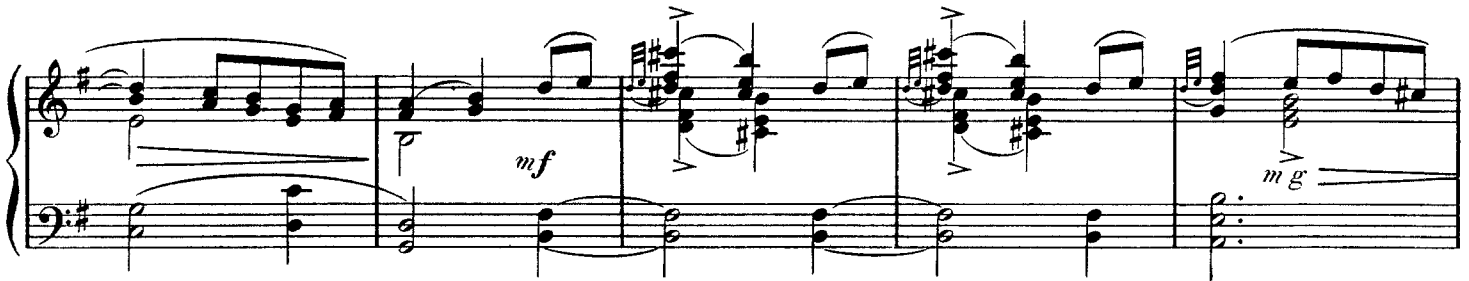
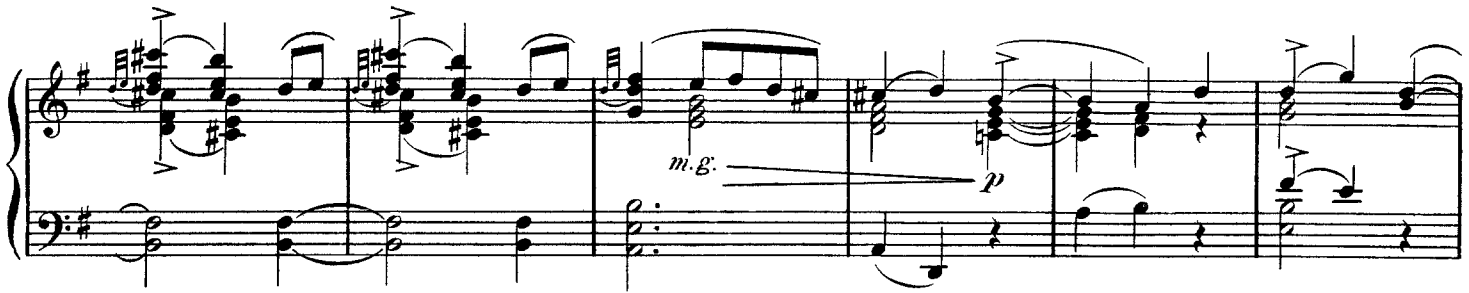
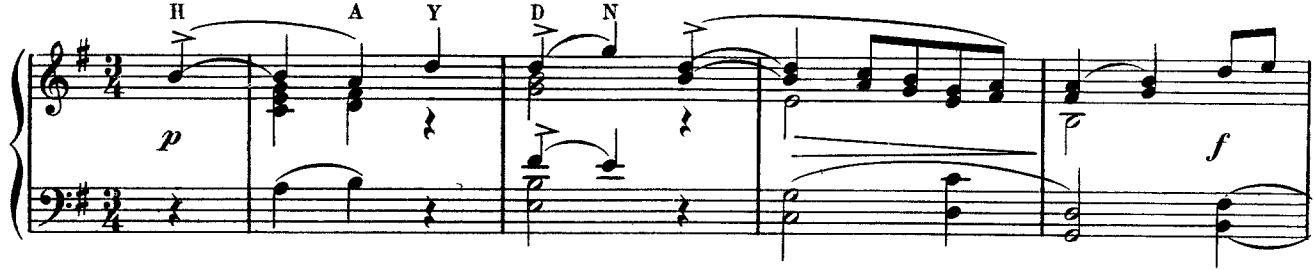


Ravel

Menuet sur le Nom d'Haydn



Mouv^t de Menuet



First system of a musical score. It consists of two staves: a treble clef staff on top and a bass clef staff on the bottom. The key signature has one sharp (F#). The first staff begins with a dynamic marking of *f* (forte). The second staff begins with a dynamic marking of *mf* (mezzo-forte). The system concludes with a dynamic marking of *p* (piano).

Second system of a musical score. It consists of two staves: a treble clef staff on top and a bass clef staff on the bottom. The key signature has one sharp (F#). The first staff begins with a dynamic marking of *pp* (pianissimo). The system concludes with a dynamic marking of *p* (piano).

Third system of a musical score. It consists of three staves: a treble clef staff on top, a middle staff with a treble clef, and a bass clef staff on the bottom. The key signature has one sharp (F#). The first staff begins with a dynamic marking of *pp* (pianissimo). The system concludes with a dynamic marking of *pp* (pianissimo). There are dynamic markings *pp* in the middle and bass staves as well. The system includes fingerings H, A, and Y.

Fourth system of a musical score. It consists of two staves: a treble clef staff on top and a bass clef staff on the bottom. The key signature has one sharp (F#). The first staff begins with a dynamic marking of *pp* (pianissimo). The system concludes with a dynamic marking of *pp* (pianissimo). There are dynamic markings *pp* in the bass staff as well. The system includes fingerings D, N, and Y.

Fifth system of a musical score. It consists of two staves: a treble clef staff on top and a bass clef staff on the bottom. The key signature has one sharp (F#). The first staff begins with a dynamic marking of *pp* (pianissimo). The system concludes with a dynamic marking of *pp* (pianissimo). The system includes dynamic markings *Retenu*, *Lent*, and *rall.* (rallentando). There are dynamic markings *pp* in the bass staff as well. The system includes fingerings H, A, Y, D, and N.